

ASX ANNOUNCEMENT

14 April 2022

ASX: G1A

ABRA CONSTRUCTION 58% COMPLETE

GALENA MINING LTD. (“Galena” or the “Company”) (ASX: G1A) is pleased to announce that the construction progress at its Abra Base Metals Mine (“Abra” or the “Project”) has reached 58% complete on 31 March 2022. Construction achievements during the month include the commencement of the Fine Ore Bin steel construction and the completion of the site’s main administration building.

Managing Director, Tony James commented, *“Consistent progress has been made at Abra during March with the underground decline reaching the 1,395mRL level which is now only 82m above the orebody. Underground diamond drilling contract has been awarded to Swick Mining Services with planned commencement of grade control drilling in May.*

At the processing plant a total of 1,141m³ (46%) of concrete has been poured project to date on track to reach overall design volume of 2,500m³. The construction of the Fine Ore Bin (FOB) has commenced as steel fabrication continues in Perth with initial steelwork arriving on site for installation”.



Figure 1 – Work progress at the Abra construction site.

Update on Abra Project progress

Overall project progress continues to remain in line with project schedule for the production critical areas of mining and processing. The processing plant EPC has reached 61% complete by project spend. The processing plant infrastructure work completed by work commitments is slightly ahead of the most recent planned work schedule by the end of March. In bulk earthworks the Tailings Storage Facility (TSF) work stopped whilst a technical review was completed on the proposed TSF, investigating the material suitability and availability for dam wall construction. That work along with the revised design work was completed in March. Civil contractor pricing and availability is currently being evaluated prior to the recommencement of the TSF. The final works package associated with the remaining non-processing infrastructure which is not production critical has been finalised and that work has commenced. This includes the remaining buildings and the drill-core processing and storage facility. Owners' costs and contingencies remain under budget.

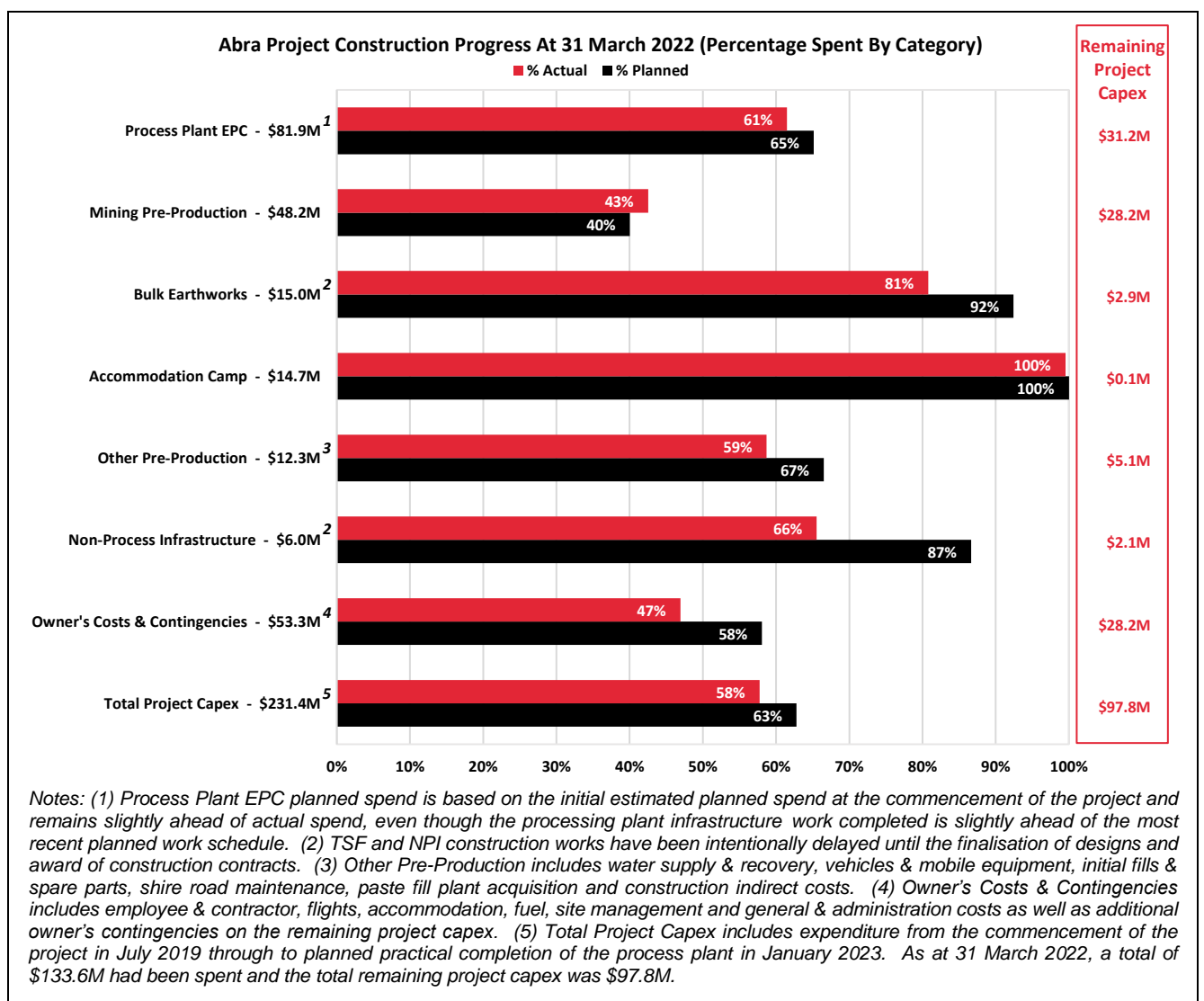


Figure 2 - Shows the progress of the various Abra construction packages.

Underground mine development has reached the 1,395mRL which is 155m below the surface and 82m above the orebody. The decline is currently heading in a southerly direction and is approaching the location of the first underground drilling platforms. These drilling platforms will enable commencement of grade control drilling in the first production levels of the mine. When this drilling commences, opportunity may arise to enable the company to carry out some further resource definition and exploration drilling. Raise drilling is scheduled to resume in late April and the primary exhaust fan is scheduled to be installed in early May. Figure 3 below shows the mine development completed to the end of March.

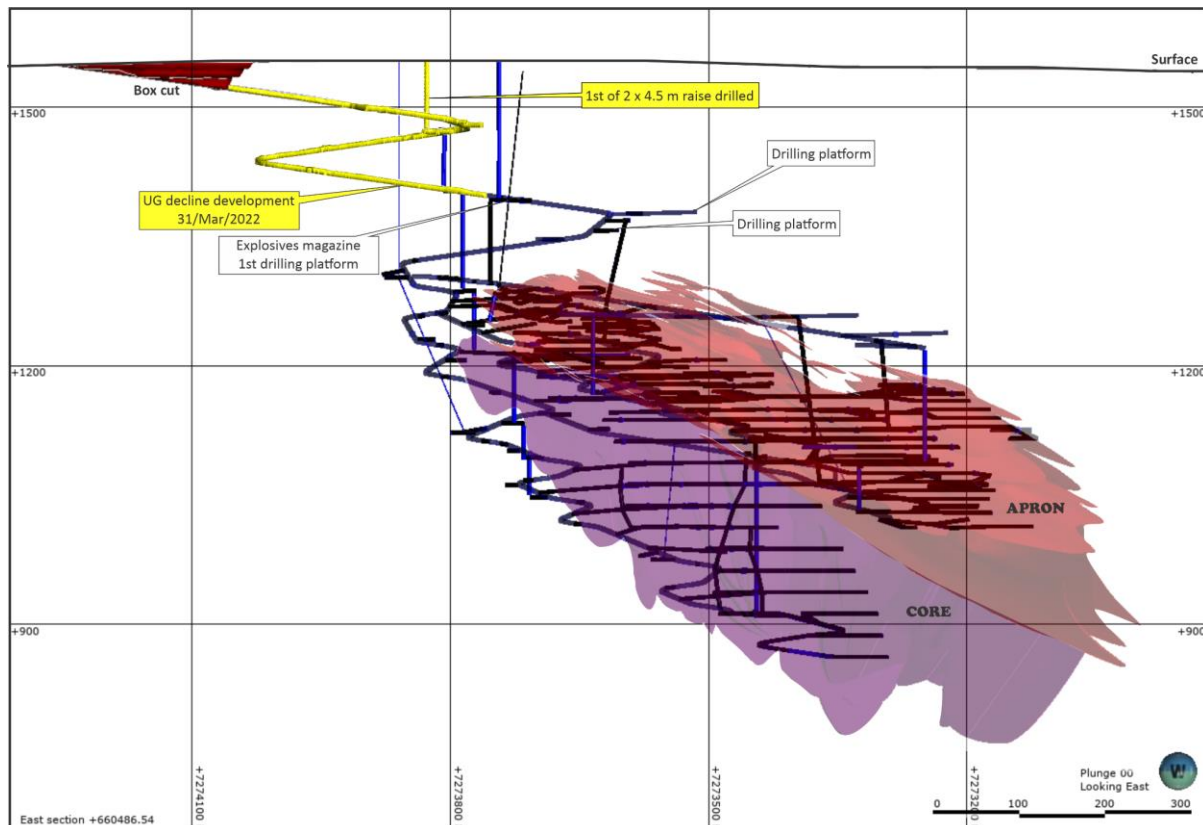


Figure 3 - Shows the progress of the Abra underground mine development to the end of March (yellow).

Abra has been advised of three revised delivery times for the overseas equipment supply for the processing plant. The construction of the secondary and tertiary cone crushers has been completed and these have commenced shipping. The arrival date for these crushers have now been confirmed as the end of May. The primary Jaw crusher has arrived on site. The thickener arrival date has improved from the previous month and will arrive in early May. Figure 10 shows a photograph of the thickener leaving the factory. The grinding mill shipments comprising of 4 separate shipments remains as previously indicated. Shipment 1 has arrived on site (mill sole plates). Shipment 2 has commenced (lubrication system). Shipment 3 and 4 have not changed from the previous advice. The regrind mill shipping date has been confirmed as arriving in early September. None of these delivery changes are expected to cause any overall construction schedule delays.

Description	Manufacturer	Source Country	Order Date	Completion Date	Forecast On Site Date
Jaw Crushers	Metso Outotec	China	19 Aug 21	10 Jan 22	On Site ¹
Cone Crushers	Metso Outotec	France	19 Aug 21	16 Mar 22	31 May 22 ²
Flotation Cells	Metso Outotec	China	18 Aug 21	01 Jul 22	12 Aug 22
Thickener	Metso Outotec	China	18 Aug 21	25 Mar 22	06 May 22 ³
Slurry Analyser	Metso Outotec	Finland	18 Aug 21	10 Jan 22	30 Apr 22 ⁴
Grinding Mill	CITIC HIC	China	23 Jul 21	20 Jun 22	07 Jul 22 ⁵
Filter	Ishigaki	Japan	26 Jul 21	28 Apr 22	09 Jun 22
Regrind Mill	Glencore	Germany	23 Sep 21	15 Jun 22	06 Sep 22 ⁶
LNG Storage Tanks	AMG Cryogenics	China	15 Jun 21	28 Apr 22	05 Jul 22

Table Notes – (1) Jaw crusher arrived on site (2) Cone crushers originally scheduled for arrival 27th April are manufactured and now scheduled to arrive 31st May following shipping confirmation (3) Thickener previously revised schedule to arrive on 12th May has again been revised to 6th May (4) Slurry analyser is in shipping and remains due in Perth in April. (5) Mill equipment shipping lot 1 (sole plates) have arrived on site. Lot 2 (lubrication systems) currently shipping as planned. Lot 3 (heads, shell & gearbox) nearing completion for end of May arrival. Lot 4 (girth gear and pinion) still scheduled for 7th July (6) Regrind Mill shipping revised to arrive 6th September as original arrival date of 3rd August was incorrect.

Table 1 – Key equipment order and delivery schedule from overseas suppliers.



Figure 4 – Crusher concrete and 3rd lift rebar steelwork installed.



Figure 5 – Fine Ore Bin (FOB) reclaim chute.



Figure 6 – Mill plinths.



Figure 7 – Concentrate storage shed walls.



Figure 8 – Primary crusher feed chute fabrication in Perth.



Figure 9 – Flotation cell fabrication.



Figure 10 – Ball mill head end nearing completion.



Figures 11-12 – Commencement of Thickener shipping.



Figure 13 – Post hole drilling commencement for solar panels at Abra.



Figure 14 – Inside of new Abra mine administration building.

The Board of Directors of Galena authorised this announcement for release to the market.

For further information contact:

Galena Mining Limited

Anthony (Tony) James
Managing Director

About Abra Base Metals Project & Location

60% owned by Galena, the Abra Base Metals Mine (“**Abra**” or the “**Project**”) is a globally significant lead-silver project located in the Gascoyne region of Western Australia (between the towns of Newman and Meekatharra, approximately 110 kilometres from Sandfire’s DeGrussa Project).

Galena completed an outstanding definitive / bankable feasibility study (“**FS**”) (see *Galena ASX announcement of 22 July 2019*) for development of an underground mine and processing facility to produce a high-value, high-grade lead-silver concentrate. A ‘final investment decision’ to complete the Project was made in June 2021 and construction is ongoing to reach first commercial production in the first quarter of 2023 calendar year.

Abra JORC Mineral Resource estimate^{1, 2}

Resource classification	Tonnes (Mt)	Lead grade (%)	Silver grade (g/t)
Measured	-	-	-
Indicated	16.9	7.4	17
Inferred	17.5	7.0	15
Total	34.5	7.2	16

Notes: 1. See Galena ASX announcement of 28 April 2021. Galena confirms that it not aware of any new information or data that materially affects the information included in Galena’s ASX announcement of 28 April 2021 and confirms that all material assumptions and technical parameters underpinning the resource estimates continue to apply and have not materially changed. 2. Calculated using ordinary kriging method and a 5.0% lead cut-off grade. Tonnages are rounded to the nearest 100,000t, lead grades to one decimal place and silver to the nearest gram. Rounding errors may occur when using the above figures.

